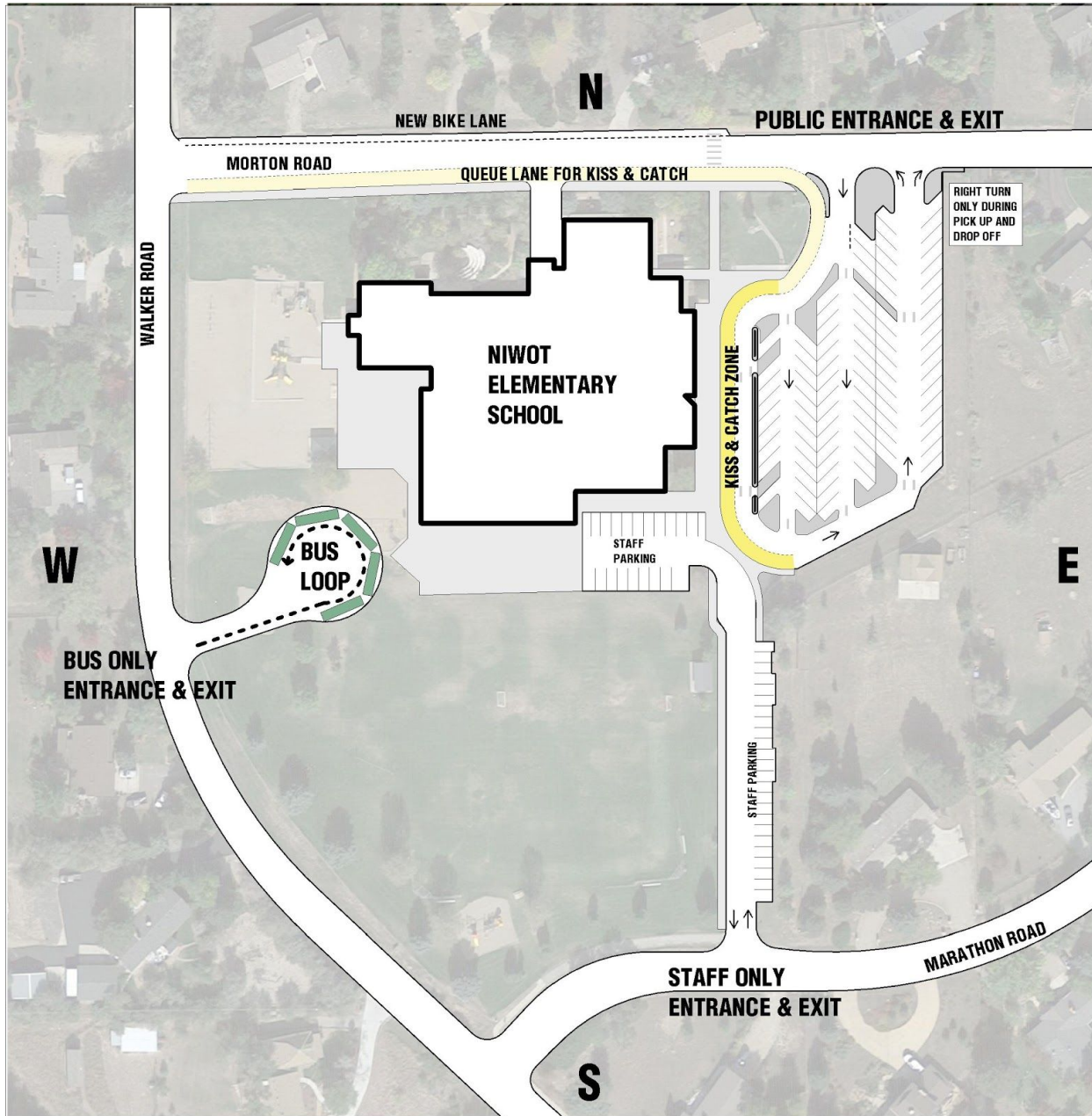


## **Traffic Changes & Reminders:**

First Bell: 9:05 am and Ending Time: 3:40 pm



### **Morning Drop-Off**

- The entrance/exit on the south side of the school off of Marathon is for staff as it leads to a staff only parking area. There is no access to the parent parking lot from the staff lot.
- **IMPORTANT: DUE TO SAFETY CONCERNS PLEASE DO NOT DROP OFF STUDENTS IN THE PARKING LOT DRIVING LANE AND/OR ALLOW THEM TO WALK IN ALONE! ALSO, please note that there is only one kiss and catch lane. If entering the parking lot, you must park and walk your child to the front of the school. For safety reasons they may not cross the crosswalk to the school unaccompanied.**
- Kiss and Catch
  - YOU CAN ONLY ENTER THE QUEUE LINE FROM WALKER & MORTON (FROM THE WEST)

- There is only one Kiss & Catch queue lane which runs west to east.
- If you are driving east to west, your only option will be parking, you cannot enter the queue line.
- **In order to keep traffic flowing and for the safety of students, please do not drop off or pick up along Morton Rd. queue line.**
- The drop off / pick up zone for students begins following the grassy area once you enter the school grounds and concludes where the sidewalk ends on the south side of the kiss and catch lane.
- **Please remember to pull as far forward as possible and do not block crosswalk lanes.**
- After you drop off your child, please use the outside lane to bypass the queue line.
- If the Kiss and Catch queue line is full (at the bottom of Morton and Walker) you will need to either park or loop around.
- Cars are not able to “park, stand, or stop” between the hours of 8:30am-9:30am and 2:30pm-4:00pm (excluding special events) on Morton Road, Marathon Road, and Walker Road.



CORRECT



INCORRECT

- Walkers & Bikers

- Walkers

- Students walking from the east will be asked to walk on the north side of Morton to the crosswalk near the preschool playground. This will avoid walking in front of the parking lot entrances and exit.
- Walkers that are coming from the west, please take advantage of the safety of the sidewalk along Morton Road.

- Bikers

- There is a new bike lane on the north side of Morton. Please utilize this and cross at the crosswalk near the preschool playground.
- There is a bike rack on the south end of the school for those biking in from Marathon and a bike rack on the north end of the school for those biking in from Morton.
- A reminder that all bikers must dismount when on school sidewalks.

- Parent Parkers

- There is only one entrance for parking, as the upper parking lot is now a one-way exit onto Morton.

- During drop-off times, when exiting the parking lot, it is a right turn only onto Morton Rd.
- If the parking lot is full you will exit the school parking lot and loop back around.
- **Parents that park must walk with their child to the front of the school.**
- Parents and students must use one of the two crosswalks when crossing the parking lots to reach the school building.

- Bus Riders

- In the morning, students will unload from their bus in the bus loop (on the west side of the school).
- Students in 3rd, 4th, and 5th grade will go straight to their lines on the south blacktop area.
- Students in 1st, & 2nd grades will walk to their lines in the back of the school.
- Kindergarten students will walk along the south perimeter and line up outside of the kindergarten entrance (in front of the building).

- Morning Line-up

- Kindergarten will continue to line-up outside Kindergarten doors.
- 3<sup>rd</sup>, 4<sup>th</sup> and 5<sup>th</sup> grade lines remain on the south blacktop.
- 1<sup>st</sup> and 2<sup>nd</sup> grades will lineup on the west blacktop - a continuation from last year.
- Parents are welcome to walk their children around the building to line-up.

- Preschool and Kindergarten

- Students will still line-up outside the green preschool doors and outside of the kindergarten entrance.

### **Afternoon Pick-Up**

- **The entrance/exit on the south side of the school off of Marathon is for staff as it leads to a staff only parking area. There is no access to the parent parking lot from the staff lot.**

- Walkers & Bikers

- Students who walk or ride bikes home will continue to exit the front or south doors of the school, depending on their grade.
- Bikers are asked not to mount their bikes until they are off of school property.
- Please utilize the bike lane (bikers) and sidewalk (walkers) on Morton Rd.

- Bus Riders

- Buses will arrive at 3:15 p.m or later (students are no longer on the playgrounds at this time).
- Students who ride buses will exit their classrooms at 3:40 and walk directly to their bus, located in the bus loop. Kindergarten students will walk out with supervision.

- Kiss and Catch

- **YOU CAN ONLY ENTER THE QUEUE LINE FROM WALKER & MORTON (FROM THE WEST)**
  - There is only one Kiss & Catch lane which runs west to east.
  - If you are driving east to west, your only option will be parking, you cannot enter the queue line.
  - **In order to keep traffic flowing and for the safety of students, please do not drop off or pick up along Morton Rd. queue line.**
  - The drop off / pick up zone for students begins following the grassy area once you enter the school grounds and concludes where the sidewalk ends on the south side of the kiss and catch lane.



- **Please remember to pull as far forward as possible and do not block crosswalk lanes.**

- After you drop off your child, please use the outside lane to bypass the queue line.
- If the Kiss and Catch queue line is full (at the bottom of Morton and Walker) you will need to either park or loop around
- Cars are still not able to “park, stand, or stop” between the hours of 8:30am-9:30am and 2:30pm-4:00pm (excluding special events) on Morton Road, Marathon Road, and Walker Road.

- Parent Parkers

- There is only one entrance for parking, as the upper parking lot is a one-way exit onto Morton Rd.
- During pick-up times, when exiting the parking lot, it is a right turn only onto Morton Rd.
- If the parking lot is full you will exit the school parking lot and loop back around.
- **Parents that park must walk to pick up their child from the front of the school. For safety reasons they may not cross the crosswalk to the parking lot unaccompanied.**
- Parents and students must use one of the two crosswalks when crossing the parking lots to reach the school building.

- Bus Loop Safety

- Car parking is not allowed in the bus loop at any time.
- Students are not allowed on the intermediate and primary playgrounds after the bus loop gate is opened.
  - The bus loop becomes a play surface while the gates are closed.
  - The bus loop gate will be opened and closed by school personnel.

### Additional Reminder

For the safety of our students, please use the crosswalks when crossing the kiss and catch lane. The barriers are there for your safety. Thank you.

